

BUILT TO BUILD YOUR FUTURE

INTRODUCING THE ALL-NEW T.16



HIGHLY FUEL-EFFICIENT



LOW OPERATIONAL COST



NEW-AGE ULTRA CABIN

NEW GENERATION ENGINE



5 Ltr. New Gen TurboTronn

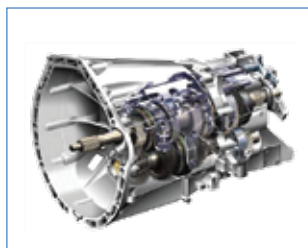
Type	TurboTronn Common Rail Diesel Engine
Number of Cylinders	4 Cylinders; In-line
Bore/Stroke (mm)	112 mm x 127 mm
Capacity (cc)	5005 cc
Max. Engine Output	132 kW (180 ps) @ 2400 r/min
Max. Torque (Nm)	590 Nm @ 1000 - 2000 r/min
Emission Compliance	Euro IV

Features	Benefits
<ul style="list-style-type: none"> • SOHC (Single Overhead Camshaft), 4 Valves per Cylinder 	<ul style="list-style-type: none"> • Industry-best flat torque curve - lesser number of gear shifts, fatigueless driving and faster turnaround time, leading to higher number of trips and more revenues • Higher low end torque - superior gradeability and restartability
<ul style="list-style-type: none"> • Common Rail FIE with Advanced Engine Management System 	<ul style="list-style-type: none"> • Industry-best fuel efficiency • Best-in-class drivability, acceleration, lesser gear shifts and improved gradeability
<ul style="list-style-type: none"> • Solenoid Injectors 	<ul style="list-style-type: none"> • Solenoid injectors give precise fuel delivery, superior reliability, resulting in increased longevity, durability and efficiency
<ul style="list-style-type: none"> • DC Motor Linear Electrical EGR with EGR Cooling 	<ul style="list-style-type: none"> • Better fuel economy • Higher engine life due to lesser cylinder temperature • No diesel exhaust fluid (AUS 32 - 32% Aqueous Urea Solution) required • Minimal maintenance



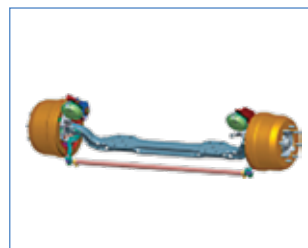
Rear Axle

Best-in-class Best Durability and Life



G750

Proven Gearbox with Cast Iron Housing and High Life



Heavy Duty Front Axle

Durable Front Axle with Higher Life and Best-in-class TCD



Telematics (Optional)

Vehicle Management System for Fleet Owners

FEATURE HIGHLIGHTS



World-class cabin comfort



High modularity, strength and durability



Best flat torque curve in its segment



Best-in-class fuel economy in most applications and terrain



Low maintenance and ease of service



Telematics option for fleet operators

Front mirror for foreground visibility & wide angle ORVMs

Panoramic view windshield

Sheet metal 3-piece design bumper

Footstep for windscreen cleaning



Available in 24 ft. deck options with 7.5 ft. width for all your application needs

MULTIPLE APPLICATIONS



Parcel & Courier



Industrial Components



FMCG



Auto Components



Agri Products



Industrial Pipes



White Goods



Beverages

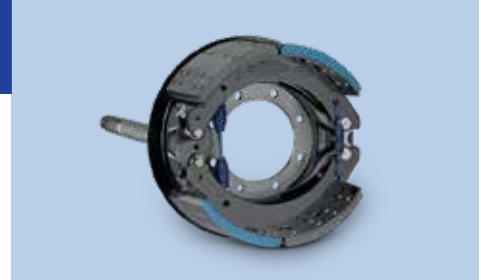


INSTRUMENT CLUSTER

- New generation multi-display electronic cluster
- Displays trip and live kmpl indicators – fuel, water in fuel, low air pressure, r/min, speed, brake, seat belt, temperature, economy, assistance, time, neutral position, etc.
- Reliable combination switch

AIR BRAKES

- Improved and safer stopping ability
- Maintenance-free
- Higher braking efficiency
- Higher reliability and safety



CONVENIENT FOOTSTEPS

- Easy to enter/exit for both driver & co-driver
- Stylish looks in sync with body design curves & arches

STEERING

- Power steering with dropping characteristic – stability at high speed
- Tilt & telescopic – suitable for any driver
- Palm effort drivable steering



SINGLE KEY OPERATION

- For the comfort and ease of driver

CHASSIS

- Best-in-class strongest chassis with bolted design for increased modularity
- Rolled from HSS 800 (high strength steel with high tensile strength)
- Straight long member – multiple wheelbase options
- Better frame: 7 mm thick, 250 mm deep long members yielding higher durability, excellent torsional bending, and lateral stiffness, best-in-class ride and handling with front anti-roll bar



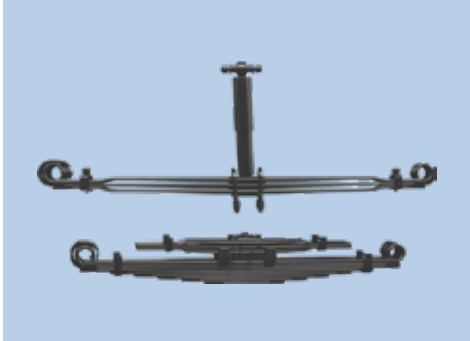


COMFORTABLE SEATING

- Wider comfortable seats for 3 (driver + 2 passengers)
- 4-way adjustable driver seat
- Integrated head-rests and arm-rest in centre
- Reduces driver fatigue
- Enhanced overall driving comfort

WORLD-CLASS CABIN

- All-new world-class steel cabin, aesthetically designed with elegant looks
- Hydraulic 45-degree tiltable cabin – easier engine access, lesser downtime, easier maintenance
- Dash-mounted gear lever – makes it walk-through
- Passes pendulum test – reinstates safety
- Company-fitted HVAC
- Utility pockets on the head box – provides more storage space
- Foldable arm rest with storage box and bottle holder, magazine pocket in door trim
- Grab handles for easy ingress/egress
- Hook to hang coat, case for goggles, utilitarian head box



SUSPENSION

- Front – parabolic leaf for smooth rides and comfort at variable loads
- Rear – semi-elliptical leaf spring
- Tuned shock absorbers – adjustable to GVW
- Front suspension comes with rubber bush

TYRES

- Radial tubeless tyres with low aspect ratio
- Better torque on wheel
- 55% longer life
- Less rolling resistance – better fuel economy



LAMPS

- Head lamp – new generation stylised clear lens lamps
- Tail lamp – integrated with LED lamps for the first time in a commercial vehicle

TECHNICAL SPECIFICATIONS	T.16
ENGINE TYPE	5 l New Gen Turbotronn
Displacement / Cubic Capacity	5005 cc
Maximum Power Output (in kW)	132 kW (180 ps) @ 2400 r/min
Maximum Torque (in Nm)	590 Nm @ 1000-2000 r/min
Bore x Stroke (in mm)	112 mm x 127 mm
Clutch	Single Plate Dry Friction Type-352 mm dia.
Transmission	GBS 750 Synchronesh, 6 Forward & 1 Reverse
FUEL SYSTEM	
Fuel Injection System	Common Rail Fuel Injection System
Fuel Tank Capacity (in litres)	160 l
ELECTRICALS	
Battery	24V 2x100 Ah
PERFORMANCE	
Gradeability	26.5%
STEERING	
Steering System	Integral Hydraulic Power-assisted: Tilt and Telescopic
FRAME	
Frame	Ladder-type Frame: 854 mm Width
BRAKES	
Service Brake	Dual Circuit Full Air S-Cam Brake with ABS: Drum-Drum Configuration (Auxiliary Exhaust Brake)
SUSPENSION & TYRES	
Front Suspension	Parabolic Springs
Rear Suspension	Semi-elliptical Leaf Springs with Parabolic Auxiliary Springs
No. of Tyres	Front 2, Rear 4, Spare 1
Front	275/80R 22.5, Tubeless
Rear	275/80R 22.5, Tubeless

WHEELBASE (mm)	5300
FAW (kg)	5990
RAW (kg)	10200
Kerb Weight (kg)	5105
GVM (kg)	16190
OVERALL DIMENSIONS	
Overall Length (mm)	9400
Overall Width (mm)	2440
Overall Height (mm)	2630

Available in Brick Red & Arctic White colour



For more information, please contact:
 International Business - Commercial Vehicles, A Block, Shiv Sagar Estate,
 Dr. Annie Besant Road, Worli, Mumbai, Maharashtra - 400 018, India.
 Tel.: 91 22 67577200 | Fax: 91 22 67577225 | Website: www.tatamotors.com

